



Wantirna College Performing Arts
Instrumental Music
2025

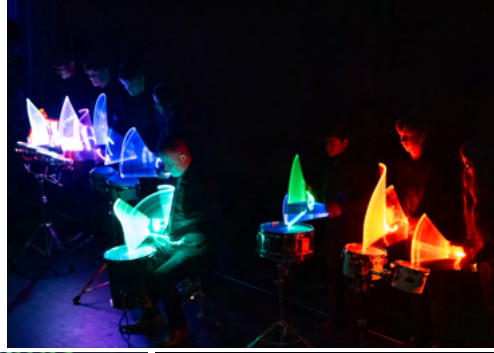


TABLE OF CONTENTS

- 2** Program Overview
- 3** Scholarship & Enrichment Programs
- 4** Quick Reference Notes
- 5** Music Practice Guideline
- 6** Lesson Information
- 8** Instrumental Music Contributions
- 9** Summary of Payments 2024
- 10** Enrolment Process 2024
- 11** Year 7 & New Students 2024
- 12** Purchasing Musical Instruments
- 13** Hiring Musical Instruments
- 14** Required Ensemble Uniform
- 16** Instrumental Music Staff

Program Overview

Wantirna College is proud to be a leader of Instrumental Music in Victoria. The College has a holistic approach to music education, with students actively engaged in both instrumental lessons and a vibrant ensemble program. Research into the benefits of music education found conclusive evidence that:

- Music Education can enhance student engagement and wellbeing as well as personal and social development, and contribute to learning in other subject areas
- Music Education benefits schools by encouraging and modelling cohesive communities
- Music has economic, cultural and social benefits for the wider community, including providing a pathway to employment in a range of occupations, increasing cultural vibrancy, and contributing to greater cross-cultural understanding and appreciation.*

At Wantirna College, students have weekly group or individual lessons with leading music educators in the State. All students work through a documented instrumental music curriculum, with opportunities to access and prepare for Australian Music Examination Board examinations, Trinity College Music Examinations and also an internal music examination process.

Wantirna College offers tuition in the following instruments**:

- **Trumpet, French Horn, Euphonium, Trombone, Tuba**
- **Violin, Viola, Cello, Double Bass**
- **Flute, Clarinet, Oboe, Saxophone, Bassoon**
- **Piano**
- **Voice**
- **Percussion**
- **Bass Guitar, Guitar**

As part of the extensive ensemble program, Wantirna College offers participation to students in the following ensembles:

Core Ensembles

- **Junior Band, Concert Band, Symphonic Band**
- **Guitar, Intermediate Guitar and Advanced Guitar Ensembles**
- **String Orchestra, String Ensemble**
- **Treble Voices, Mixed Choir**
- **Percussion Ensemble**

Extension Ensembles

- **Contemporary Bands**
- **Harmony Group**
- **Stage Band**
- **Junior Jazz**
- **Flute Consort, Clarinet Choir, Saxophone Squad, Brass Ensemble**

We strongly believe that Music Education should be available to all students, so lessons and ensemble participation is heavily subsidised and offered to families at a very low rate.

*1 Inquiry into the extent, benefits and potential of music education in Victorian schools 2013, the Government of Victoria

**Other instruments may be available upon request.

Scholarships & Enrichment Programs

2025 Scholarships Instruments - Bassoon, Tuba & French Horn

Every year, we offer scholarships for select exotic instruments. For 2025, these instruments will be Bassoon, Tuba and French Horn. Students who wish to receive the Scholarship must commence learning one of these instruments in 2025 and commit to the program for 2 years. The Instrumental Music Contribution (\$550) must be paid in the first year but will be waived in the second year (2026). Instrument Hire will also be waived in the second year.

Bass Guitar & Double Bass Enrichment Program

Students enrolling in the Bass Program will learn both Bass Guitar and Double Bass. This means students will have separate Instrumental Music lessons for both Bass Guitar and Double Bass for the cost of one instrument (\$550). Students will be required to participate in a complimentary core ensemble.

Bass Guitar and Double Bass are complimentary instruments as Bass playing is a skill that occurs across music styles. Students studying both upright Double Bass and Bass Guitar will receive the broadest possible exposure to these styles.

Please note: Students must purchase/acquire their own Bass Guitar. See pages 11, 12 & 13.

Piano Plus Enrichment Program

All students learning Piano will have the option to also learn a Brass, Woodwind or String (excluding Guitar & Bass Guitar) instrument at the reduced combined cost of \$700 per year. Students will have separate Instrumental Music Lessons and be required to participate in a complimentary core ensemble.

Please note: Students who learn Piano only are required to participate in Choir.



Quick Reference Notes

We are always delighted when students wish to join our Instrumental Music Program. The Instrumental Music Handbook contains detailed information about all aspects of our program and is intended to be used as a reference guide by parents and students.

Here are key points about our program for quick reference:

Costs & Payment

Instrumental Music/Voice Lessons cost \$550 per year for the first instrument and \$300 per year for each additional instrument. This is a compulsory contribution with full payment (or commencement of payment plan) due via Compass by 17 March 2025. Instrumental Music/Voice Contributions are not refundable. **See page 8 for all costs.**

Ensembles

All students learning an instrument/voice must also participate in an ensemble. Ensembles rehearse before/after school and at lunchtimes. This is included in the cost of learning and instrument/voice. **See page 2 & 5.**

Attendance

It is compulsory for all Instrumental Music/Voice students to attend their weekly lessons, ensemble rehearsals, all performances, and the annual Music Camp unless there is a valid reason not to attend. Music lessons take precedence over SACs/Tests, assemblies and activities - except for whole school or offsite activities. **See page 6.**

Music Camp

It is expected that all students attend Music Camp. **See page 8.**

Required Ensemble Uniform

All students must own and wear an approved black Ensemble Shirt. This costs \$40 and is available at the Wairarapa College Uniform Shop and also at Lowes. **See page 14.**

Contact Us

The first point of contact for all lesson, ensemble, performance or attendance enquiries is your student's teacher through Compass. For payment or general enquiries, please contact Nicholetta in the Music Office: 9881 7149. **See page 16.**

Music Practice Guideline

In addition to their weekly lessons, we expect that all students in our program will aim for daily practice on their Instrument/Voice. This may vary from 15mins to 30mins to an hour or more depending on the student's level and will be set/guided by their Instrumental Music teacher.

Best Practice

Parents can help by:

- Prioritising their student's practice and showing active interest in their learning
- Ensuring there is a designated and available practice space away from distractions or interruptions from other family members, and/or;
- Carving out a regular practice time without interruptions, that all others respect and;
- Ensuring instruments are in good repair and readily accessible. For example, items are not stacked onto a piano or percussion kit.
- Encouraging your student to practice always be supportive
- Attending all performances when possible

Remember: Practicing only on the weekend is not the best way we learn a new skill, retain information or improve - small amounts of daily practice will get you there faster!



Lesson Information

Students have small group lessons (maximum four students per group). Each lesson lasts for 37 minutes (half of a single period) and takes place during normal school hours. Lesson days depend on the instrument the student is learning and which teacher is providing the lessons. All students, including Guitar, learn music notation.

All students are expected to go to their Instrumental Music Lessons instead of their regular classes* Please note that students should also go to their instrumental lessons even when they are on Monitor Duty for the day.

Year 12 students have their instrumental lessons scheduled either during their study periods, before school, after school or at lunchtime to avoid classes - depending on timetabling constraints.

Instrumental Music Lessons are timetabled to rotate across different periods on the same day each week to minimise disruption to classes over the Term. It is the student's responsibility to catch up on any work they miss in their normal classes while having an Instrumental Music Lesson.

Instrumental Music Lessons and Ensemble Rehearsal times can be found on each student's Compass schedule. Please see the example student timetabled week (facing page), with the Instrumental Music Lesson and Ensemble Rehearsal circled.

***IMPORTANT: Year 7-11 students who have assessments (SAC/tests) when their music lesson is scheduled, should still attend their music lesson and their classroom teacher will reschedule their assessment. (Year 12 students are never scheduled during class time).**

Ensembles

It is **mandatory** that all students having instrumental/vocal lessons in our program must also participate in a **core** ensemble, as appropriate to their instrument and standard. Students will only receive lessons if they are a part of our ensembles.

Piano students who don't learn another instrument are required to be in a Choir. There are a limited number of spaces available in other ensembles for piano students, by invitation only.

Once students are successful in gaining a place, they will be assigned an ensemble and their Ensemble Rehearsal time will be added to their Compass schedule. Some beginning students will commence ensembles later in the year than others, depending on their instrument and level of expertise.

We currently have over twenty ensembles, which rehearse either before or after school, or at lunchtime, on various days of the week.

Students having private instrumental tuition outside of the College are also invited and encouraged to participate in our College ensembles (please refer to 'Ensemble Only Contribution' on p. 5).

Student:

Active

Dashboard Schedule Personal Learning Tasks Attendance Reports Analytics Assets Insights Pulse

Today	Jump to: 25/07/2021	Go	Mon 26	Tue 27	Wed 28	Thu 29	Fri 30	Sat 31
8am								
9am			8:45: 1 - 8EIJ - D3 - PLU	8:45: 1 - 8PDJ - D5 - BEO	8:45: 1 - 8DRJ - L2 - BAE	8:45: 1 - 8HPJ - J3 - MCP	8:45: 1 - 8MAJ - I6 - RAN	
10am			10:05: 2 - 8HUJ - E3 - PRA	10:05: 2 - 8DRJ - L2 - BAE	10:05: 2 - 8CHJ - K4 - K2 - WAL	10:05: 2 - 8PDJ - D5 - BEO	10:05: 2 - 8HPJ - PE\$ J3 - MCP	
11am								
12pm			11:45: 3 - 8MAJ - I6 - RAN	11:45: 3 - 8EIJ - DR - PLU	11:45: 3 - 8MAJ - I6 - RAN SPO	11:45: 3 - 8EIJ - D3 - G1 - PLU JSTE	11:45: 3 - 8SCJ - K5 - KAG	
1pm			12:23: BRASSF - J					
2pm			1:50: 4 - 8CHJ - A5 - WAL	1:50: 4 - 8HPJ - PE4 - MCP	1:50: 4 - 8HUJ - G1 - PRA	1:50: 4 - 8SCJ - K2 - KAG	1:50: 4 - 8PDJ - D5 - BEO	
3pm			3:15: CONCERTBAND - L1 - POY					
4pm								
5pm								

Instrumental Music Fee Contributions

The Warrnambool College Instrumental Music Program is self-funded. This means that we rely on the money raised from the annual parent contributions to help run the program.

The Instrumental Music Contributions are compulsory fees that must be fully paid (or payment plan commenced) through your Compass portal by 17 March 2025 for your child to be able to participate in the program.

Please note that music contributions are non-refundable.

Your compulsory contributions:

- cover part of the expense of running our successful program;
- provides our students with quality specialist music teachers; and
- contributes to the purchase of sheet music, hire instruments and equipment, as well as associated repairs and maintenance costs, and many other program-associated costs

Accompaniment/VCE Students

Though we provide accompaniment for school events there is an additional compulsory 'VCE Music Enhancement Contribution' paid by VCE students due to the additional accompaniment, equipment and staffing they require (see next page).

Additional Costs

We offer lessons that are far less expensive than private tuition. However, the Instrumental Music Contributions do not cover all costs of participating in the program.

Additional costs incurred by each student may include purchasing instruments (**please consult your Instrumental Music Teacher before purchasing instruments**), servicing and repairing instruments, Music Camps and excursions, bus transport to and from performances, and fees for AMEB and Trinity Guildhall practical and theory exams (which are optional exams).

Ensemble Uniform/Performance Blacks

All Instrumental students, including Voice students, must own the approved black ensemble uniform to wear at most performances. Please refer to page 5.

Music Camp

It is expected that all Instrumental Music students, including Voice, will attend the annual Music Camp. The proposed dates for the 2025 Music Camp are Mon 23 June to Wed 25 June and it will be held at CYC The Island, 53 Church St, Cowes (Phillip Island). Further details on page 7. A payment plan is available for this event and eligible parents can use CSEF funding towards camp costs.

Instrumental Music Payment Summary 2025

The Instrumental Music Contributions are compulsory, non-refundable fees that must be paid (or payment plan commenced) through your Compass Portal by 17 March 2025.

Instrumental Music Contribution (including VCE)

\$550 per year

For one instrument. Includes the **Bass Guitar/Double Bass Enrichment Program**

Additional Instrument Contribution

\$300 per year

For each additional instrument learnt.

VCE Music Enhancement Contribution

\$250 per year

For VCE Students only. This contributes to the cost of accompanists.

Piano Plus Enrichment Program

\$700 per year

Learn Piano and a Brass, Strings or Woodwind Instrument

Instrument Hire Fee

\$250 per year

For each instrument hired from the College.

Waived for new Year 7 students in 2025.

Ensemble Only Contribution

\$150 per year

For students participating in an ensemble but not learning an instrument/voice at the school (covers all ensembles).

Music Camp

\$360 per student (price to be confirmed early 2025)

Ensemble Shirt

\$40 - available at Uniform Shop or Lowes

All students must own and wear our black ensemble shirt for performances.

See overleaf for Scholarship Opportunities

Please note – 'voice' is an 'instrument'

Enrolment Process for 2025

RE-ENROLMENT

All current parents will be emailed a link to a 'Re-enrolment Form' on Fri 22 Nov 2024. To secure a place, the form must be **submitted online by Friday 29 Nov 2024**.

Parents will be notified when payments open via the Compass portal in January and **payment must be made (or payment plan commenced) by Mon 17 Mar 2025**.

*Students who are enrolling in 'Ensemble Only' must pay the full \$150 fee by Mon 17 Mar 2024.

NEW ENROLMENTS

We will be running a **Music Information Session on Monday 9 December 2024** as part of the Year 7 Orientation Evening. This will give prospective parents and students important information about the Instrumental Music program and the opportunity to ask questions.

Prior Experience

For students who already have prior experience on an instrument, parents will be provided with an 'Application for Students with Prior Experience' form that **must be completed and returned by Monday 16 Dec 2024**.

Instrument Trial Day – Friday 31 Jan 2025

All Year 7 students will attend an 'Instrument Trial Day' at the start of Term One where they will have the chance to try out all the instruments offered at the school.

Afterwards, an online 'Expression of Interest' form will be emailed home to parents, so that interested students can apply to learn their selected instrument/s. To avoid the risk of being placed on a waiting list the 'Expression of Interest' form **must be completed and returned by Wednesday 5 Feb 2025**.

Successful applicants will be notified by email whether they have been accepted in the program or, in some cases, placed on a waiting list. Payment will then appear via the Compass portal. **Payment must be made, or a payment plan commenced, by Mon 17 Mar 2025**.

Summary of Important Dates 2024/2025

Fri 22 Nov 2024	Re-enrolment Form emailed to all current families
Fri 29 Nov 2024	Re-enrolment Form submission due
Mon 9 Dec 2024	Music Information Session at Yr 7 Orientation Evening
Mon 16 Dec 2024	Application for Students with Prior Experience Form due
Fri 31 Jan 2025	Instrumental Trial Day for all new students
Fri 31 Jan 2025	Expression of Interest Form sent to new student parents
Wed 5 Feb 2025	Expression of Interest Form submission due
Mon 17 Mar 2025	Full Payment Due OR Payment Plan Commenced via Compass

Year 7 & New Students 2025

Instrument Trial Day - Friday 31 January 2025

On Friday 31 January, we will hold our annual Instrumental Trial Day for all Year 7 students. This will be an opportunity for new students to try the myriad instruments available to learn at Wantirna College. Students are provided with an 'Instrument Trial Day' form to help them identify instruments they may be interested in learning.

This information will then be collated and where students have shown interest in learning an instrument, parents will be contacted by our Leader of Performing Arts, Daniel van Bergen, with a link to the Expression of Interest form. **The Expression of Interest form must be returned by Wed 5 February 2025.**

Students will be notified by email if they have been accepted into the program or, in some cases, placed on a waiting list. Payment will then appear via the Compass portal. **Payment must be made, or payment plan commenced, by Monday 17 Mar 2025.**

Instrument Hire

The Instrument Hire fee has been waived for new Year 7 students in 2025. Students requiring an instrument will be issued with their instrument during their first lesson.

Scholarships

Every year, we offer scholarships for select exotic instruments. For 2025, these instruments will be Bassoon, Tuba and French Horn. Students who wish to receive the Scholarship must commence learning one of these instruments in 2025 and commit to the program for 2 years. The Instrumental Music Contribution (\$550) must be paid in the first year but will be waived in the second year (2026). Instrument Hire will also be waived in the second year.



IMPORTANT

Purchasing Musical Instruments

We are unable to hire Percussion, Piano or Guitar instruments

PERCUSSION STUDENTS

Students choosing to learn Percussion are required to purchase a Percussion Pack that has been put together specifically for the Percussion students at Warrington College.

The Percussion Pack includes drumsticks, one pair of glock mallets, and an optimum glockenspiel with bag practice pad and stand. The cost is around \$300, but includes quality instruments that will retain their value. The pack is available to order online at Optimum Percussion (Optimum Glockenspiel with bag practice pad, stand).

PIANO STUDENTS

Students choosing to learn Piano must purchase their own keyboard to use for practising at home. We recommend a weighted, 88 key instrument. This could be a Yamaha P45 or P35, available from Keyboard Corner in Boronia, phone 9761 0003. **If there is already a piano at home, there is no need to purchase a keyboard.**

GUITAR & BASS GUITAR STUDENTS

Students learning Guitar (including Electric Guitar) and Electric Bass Guitar are required to purchase their own instrument. The College owns amplifiers, which the students can use during lessons and ensemble rehearsals, however they are not hired out to students to use at home. Students learning an electric instrument will be required to purchase their own amplifier for home practice.

As a guide, we recommend the purchase of either Eastman, Sigma or Cordoba Acoustic Guitars and Yamaha or Fender Electric Guitars. We recommend Fender or Squire brands when purchasing an Electric Bass Guitar. We particularly recommend the 'Beginner Bass and Amp Combo' from the Bass Centre in South Melbourne.

ALL OTHER INSTRUMENTS - Please consult your Instrumental Music teacher before purchasing.
PLEASE NOTE: Instruments from Aldi or Bunnings are not suitable.



IMPORTANT

Hiring Musical Instruments

**Please consult your child's Instrumental Music Teacher
BEFORE purchasing an instrument!**

Instruments from ALDI or BUNNINGS ARE NOT SUITABLE for lessons

Students participating in the Instrumental Music Program at Wantirna College may choose to either:

- 1) Buy** a brand new instrument – either outright or on a payment plan.
- 2) Hire/Buy** a pre-loved instrument **with option to buy at any time.**
- 3) Hire** an instrument from Wantirna College for one year at a cost of \$250

Option 1 - Buy a Brand New Instrument

We recommend the following suppliers for purchasing a brand new instrument either outright or through a purchase plan:

Fine Music:	9818 8520	finemusiconline.com.au
Ozwinds	9578 3677	www.ozwinds.com.au
Future Music:	9808 8988	futuremusic.com.au
Musicorp:	1300 959 911	www.musicorp.com.au
Bows for Strings	8802 7905	bowsforstrings.com

Option 2 – Hire a Pre-Loved Instrument

We also recommend the above suppliers for hiring a pre-loved instrument with a buy-out option.

Option 3 – Hire an Instrument from Wantirna College \$250

To hire an instrument from the College, please follow the link in your online enrolment form and complete the 'Wantirna College Instrument Hire' form.

The Hire Instrument will be issued to your child at their first lesson, as long as the 'Instrument Hire' form has been completed and submitted online. Please note:

- Limited numbers of instruments available for hire.
- One year commitment.
- Student returns instrument at the end of the school year.

We offer all instruments for hire except Guitar/Bass Guitar/Electric Guitar, Percussion or Piano/Keyboard instruments(see p.8).

**Please consult your child's Instrumental Music Teacher
BEFORE purchasing an instrument!**

Required Ensemble Uniform (Performance Blacks)

All instrumental and vocal students are required to wear an ensemble uniform when performing at various events during the year:

Approved black ensemble shirt, black shoes, black socks and black tailored pants (no denim) or black skirt with black tights. No midribs, cleavage or shorts

Black Ensemble Shirt

All Instrumental Music students must own and wear the **approved** black Ensemble Shirt. This is available from the Wantirna College Uniform Shop at a cost of \$40. It may also be found at Lowes

The Uniform Shop is usually open on Monday and Thursday from 3pm to 5pm, as well as the first Saturday of each school term from 1pm to 3pm. They also open on Wednesday from 3pm to 5pm during February. Uniform enquires can be emailed to: uniform@wantirnacollege.vic.edu.au

Black Tailored Pants

Black tailored pants can be found at Kmart and Lowes

VCE Solo Performances

Students under taking VCE Music may wear formal attire for solo performances



Instrumental Music Staff

Our very experienced, professional and passionate team of Instrumental Music teachers, are ready to help your child develop their musical abilities. They can be contacted by email through Compass

Daniel van Bergen

MTeach, BMus, ATCL, A MusA, ADipA

Leader of Performing Arts

Brass & Classroom Music

Stuart Andrew

BMus, DipAE, AMusA

Piano & Accompaniment

Alexander Howroyd

DipMus

Brass

Jonathan Skovron

MMusPT, BMus, DipEd

Accompaniment

Lachlan Barratt

BEEd, BMus, DipMus

Guitar & Classroom Music

Susan Hull

BMus, GradDip, GradDipEd

Voice

Hannah Phillips

BMus, BSc

Woodwind

Jack Bennett

BMus

Percussion

Penny Karahalios

MA, MMus (Hons), DipED, AMusA

Woodwind

Chayla Ueckert-Smith

MTeach, MMusPT, BVA, BMus

Double Reed

Natalie Carolan

MTeach, BMus

Voice

Stephen Langley

BMus (Hons), DipAppSc, DipEd

Strings

Madeline Weybury

MTeach, BMus, AdvDip

Bass Guitar

Luke Champion

BMus

Piano

Sally Newstead

BMus, GradDipEd

Woodwind & Classroom Music

Jessica Leigh

MMus, MMusPT, MTeach

Brass & Classroom Music

Elle Osborne

MPhil (Mus)

Strings

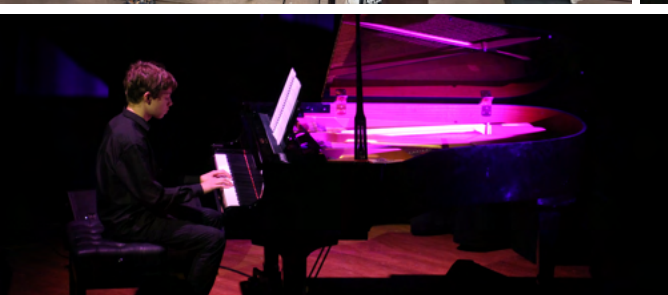
~
Performing Arts Office 03 9881 7149
~

Parents are welcome to contact the Performing Arts Office at any time. Our hours are 8:45am to 4pm and we aim to respond to all enquiries within 24 hours.

Nicholetta Rigano
Performing Arts Administrator
nri@wantirnacollege.vic.edu.au

Daniel van Bergen
Leader of Performing Arts
dva@wantirnacollege.vic.edu.au





VISION STATEMENT

Wantirna College is a leading school for the Performing Arts in Victoria and provides outstanding Performing Arts education, unique co-curricular opportunities and a flourishing Instrumental Music program focused on the development of the next generation of musicians, actors, dancers and creative young people in Australia.

VALUES

Excellence & Professionalism
Dedication & Teamwork
Resilience & Risk Taking
Integrity & Leadership

These values are seen as intrinsic to the holistic development of young artists in Australia.

